

Cruella

Intermediate level

Task 1: Warm-up

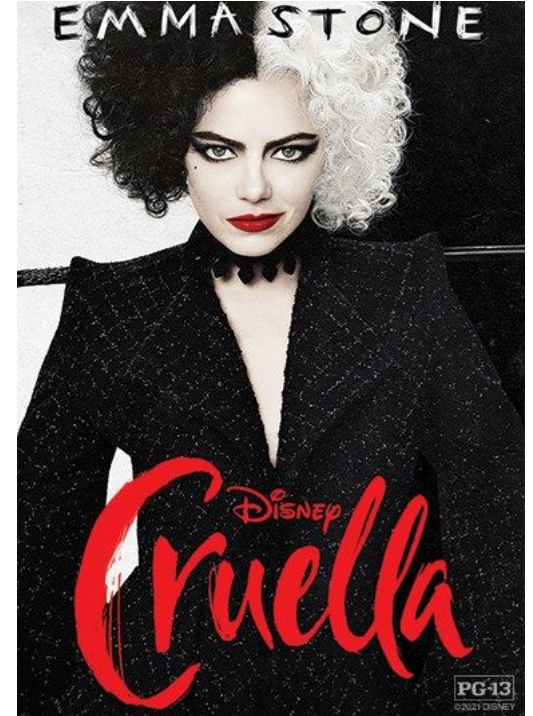
Discuss the questions in pairs.

1. What movies do you usually watch on summer holidays? Explain your choice.
2. What is your all-time favourite movie?
3. Do you think films can be educational?
4. Do you like films produced by Walt Disney Pictures? Why/why not? What are the peculiarities of their films?



Task 2: Lead-in

Look at the poster of the film. Can you judge the movie by the poster? What opinion did you have about the film before and after watching it?



Task 3: Characters

A. Match the pictures with the characters.



1. Jasper
2. Cruella
3. Horace
4. Baroness
5. Maya

B. Watch the [video](#) and describe the characters. Who is your favourite one? Why?

Useful language:

In my eyes...

To my mind...

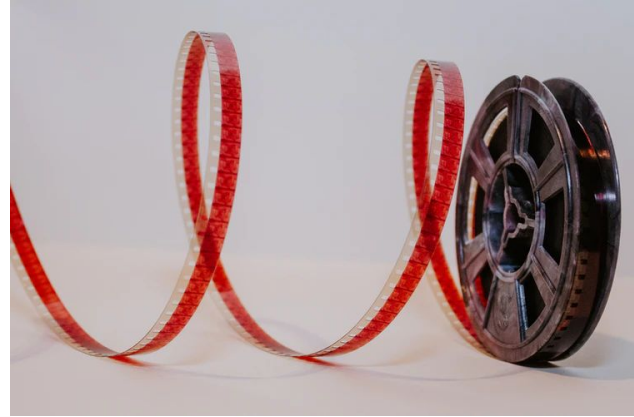
From my point of view...

I may be wrong but I think...

I have the feeling that...

As for me...

Words to use: arrogant, naive, beautiful inside and out, annoying, jealous, smart, energetic, confident, cruel, sensitive, easy-going, cruel.



Task 4: Vocabulary

Match the words with the definitions.

1. To withdraw
 2. To expel
 3. To push off
 4. To keep an eye on sb
 5. Diabolical
 6. To be delighted
 7. Heirloom
- A. To officially make (someone) leave a school or other organization.
 - B. Extremely evil or cruel.
 - C. Something that has been in a family for generations.
 - D. To remove or take away (something) from a particular place or position.
 - E. To shove.
 - F. Greatly pleased.
 - G. To watch someone or something or stay informed about the person's behavior, esp. to keep someone out of trouble.

Task 5: Vocabulary practice

Fill in the gaps with the missing words: *to withdraw, to expel, to push off, to keep an eye on sb, diabolical, to be delighted, heirloom.*

1. Baroness didn't want to have a child and so she made a ____ request - to kill the baby.
2. The policeman asked him to be very careful and ____ the prisoners.
3. Estella's mother told the head of the school that she was going to ____ her daughter from school because they didn't like it.
4. When Baron heard the news, he gave the family ____ to his wife.
5. She was ____ from school because of bad behaviour.
6. Finally, Estella got the job she was always dreaming of and she ____.
7. Baroness hugged Estella and then suddenly ____ her ____ the cliff.

Task 6: Movie quiz

Choose the correct option.

1. What is Cruella's real name?
 - a) Estella
 - b) Olive
 - c) Stella
2. Who stars as Cruella?
 - a) Chris Rock
 - b) Emma Stone
 - c) Jane Pebble
3. What does Baroness do? She is
 - a) a dog keeper
 - b) a fashion designer
 - c) an influencer
4. Where did Cruella take the name "De Vil" from?
 - a) a coat
 - b) a dress
 - c) a car
5. Who are Cruella's friends?
 - a) Jasper and Horatio
 - b) Jasper and Horace
 - c) John and Horace
6. How did Cruella's mother die?
 - a) She was pushed off the cliff by the dogs.
 - b) Baroness pushed her off the cliff.
 - c) She had a car accident.

7. What family heirloom did Cruella lose after her mother's death?

- a) a necklace
- b) a ring
- c) a bracelet

8. What was Baroness shocked by at the party?

- a) quantity of dogs
- b) hairstyle of the guests
- c) rats

9. What did Baroness use to make orders to her dogs?

- a) a whistle
- b) her necklace
- c) a stick

10. Did Estella really die at the end of the film?

- a) Yes, she did.
- b) No, but she was injured.
- c) No, she didn't.

Task 7: Twitter comments

Read the comments about the movie taken from Twitter. Do you agree/disagree? Share your personal opinion on social media using #Cruella.



Jazz Tangcay ✓
@jazzt



Emma Stone is excellent. #Cruella is a brilliant origin story with lots of heart. You won't be able to get enough of Emma Thompson's Baroness and Stone's #Cruella.



Courtney Howard ✓
@Lulamaybelle



#Cruella is absolutely divine. Deliciously devilish, wonderfully wicked, undeniably outrageous. Emma Stone & Emma Thompson are truly an iconic pairing & they play it to the hilt. Costume designer Jenny Beavan deserves 3rd billing. Plus, it's got a killer soundtrack. @cruella

Task 7: Twitter comments



Scott Menzel ✓

@ScottDMenzel



Cruella could be the biggest surprise of the summer. Bold, dark, & wonderfully anti-Disney. Emma Stone is perfection as Cruella. Hair & Makeup, Production Design & Costume Design are sure bets for Oscars noms. Paul Walter Hauser is terrific and Winks the dog is adorable. [#Cruella](#)



Erik Davis ✓

@ErikDavis



[#Cruella](#) is a wickedly fun watch w/ amazing costumes & an epic soundtrack. Emma Stone and Emma Thompson are exceptionally evil & hilarious, and they make the movie memorable. Also, Paul Walter Hauser steals scenes, as he tends to do. It's like a Disneyfied DEVIL WEARS PRADA

Task 8: Discussion

Discuss the questions using the new words where possible: *to withdraw, to expel, to push off, to keep an eye on sb, diabolical, to be delighted, heirloom.*

1. Do you know any other famous movie character/friend/acquaintance who has been expelled from school because of bad behaviour? How do you think this problem must be solved? Is expelling the best decision for the child?
2. Did Cruella feel delighted after her revenge? Why do you think so?
3. Would Cruella's mother have died if she had kept an eye on her daughter and hadn't allowed to go out of the car?
4. What family heirloom did Cruella get? Was it precious for her? Explain your answer.

Task 9

Choose one of the characters and retell the story using the screenshots if you were that person. Your speech must not exceed 4 minutes.







Keys:

Task 3

A - 2

B - 4

C - 1

D - 5

E - 3

Task 4

1. - D

2. - A

3. - E

4. - G

5. - B

6. - F

7. - C

Task 5

1. diabolical
2. keep an eye
3. withdraw
4. heirloom
5. expelled
6. was delighted
7. pushed her off

Task 6

1. - a
2. - b
3. - b
4. - c
5. - b
6. - a
7. - a
8. - b
9. - a
10. - c